



University Buildings

The Looming Shift

University as a Mobile Way of Life

Spatial Innovation and Interaction of Faculty Buildings

University Services

379



9 772092 519005
ISSN 2092-5190

Faculty of Fine Arts in Tenerife

gpy arquitectos



The new Faculty of Fine Arts is located in a heterogeneous area, adjacent to the island highway and on the periphery of the University Campus.

Main challenge was to create a link between the new faculty building and its surroundings by working with the open public spaces and to increase the synergies between the academic complex and its urban context.

The new building presents itself as an extension of the Campus's public space, while creating an autonomous interior landscape of its own. A skin of suspended concrete slats adopts a curved shape which develops on the different levels protecting and wrapping the open space of the building. Campus circulation is collected and guided by a public plaza that extends through the building's main entrance and is



transformed into a spacious terrace overlooking the inner courtyard. From the main entrance, circulation is continuous, following half-open, undulating corridors.

The teaching areas are distributed along a continuous band accompanying the open corridors and dispose of mobile dividing walls that allow for creating classrooms of different sizes or even opening up the whole floor, depending on the

needs. Adding to this flexibility in use are multiple spaces like the patio-gardens and open ramps, the covered galleries and the entrance terrace, conceived as open exhibition and teaching areas and places for social exchange.

The new Faculty of Fine Arts offers ground-breaking, innovative spaces for experimental and creative education of future students of visual arts.



1. Faculty of Fine Arts
2. Faculty of Communication
3. Faculty of Humanities
4. Faculty of Philology
5. Library
6. Faculty of Law and Political Sciences
7. Faculty of Economics
8. TF-5 motorway
9. Cesar Manrique avenue
10. Campus de Guajara avenue



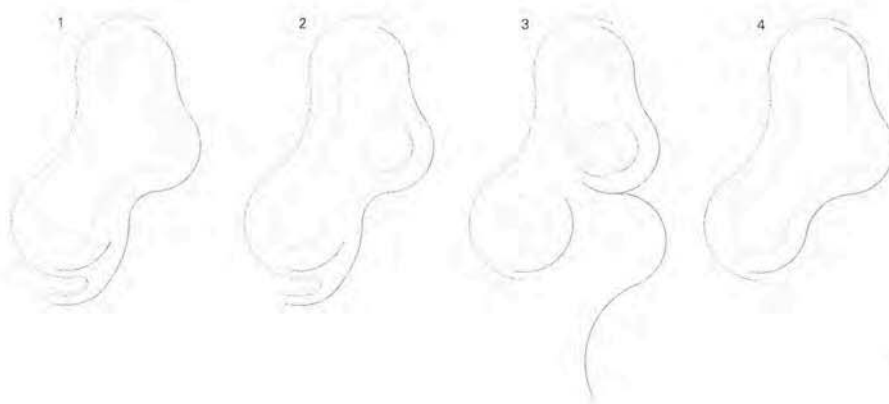
라 라구나 대학교 예술학부

스페인 북부 작은 섬 라 라구나에 자리한 커다란 대학 캠퍼스. 이곳에 기존 건물을 한데 아우르는 예술학부 건물이 들어섰다. 고속도로와 인접한 새 건물은 섬 주변 풍경과 대비를 이루며 절묘한 조화를 이루어낸다.

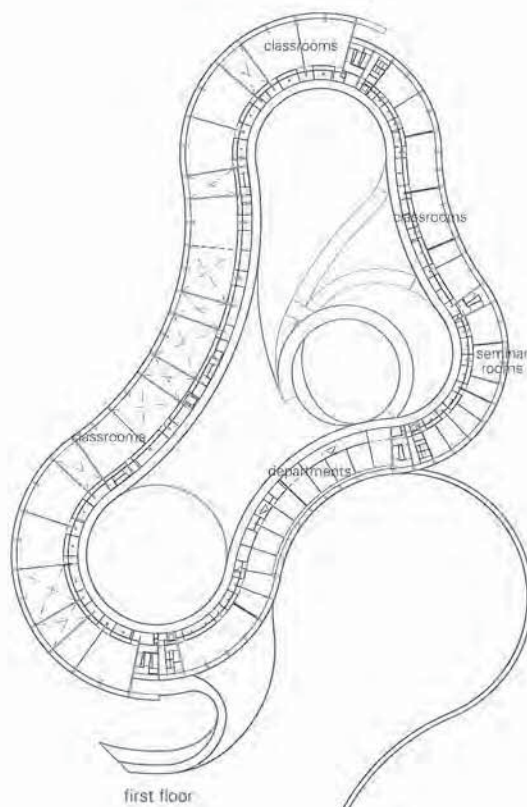
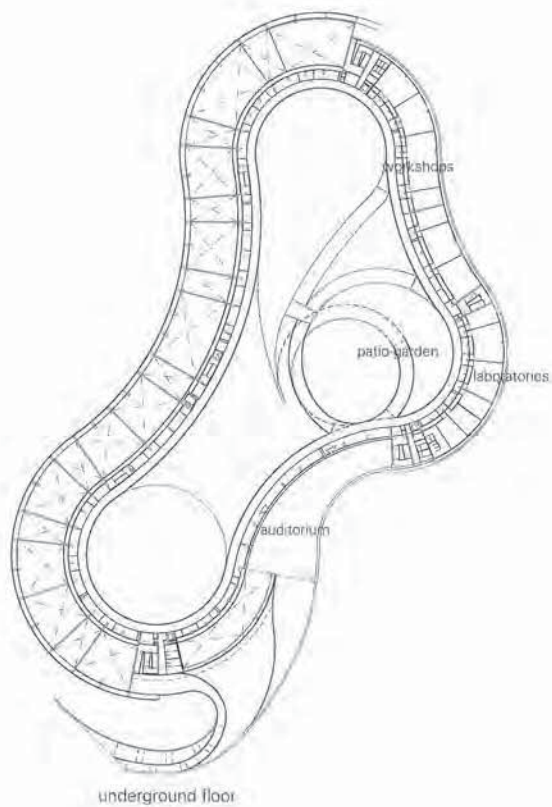
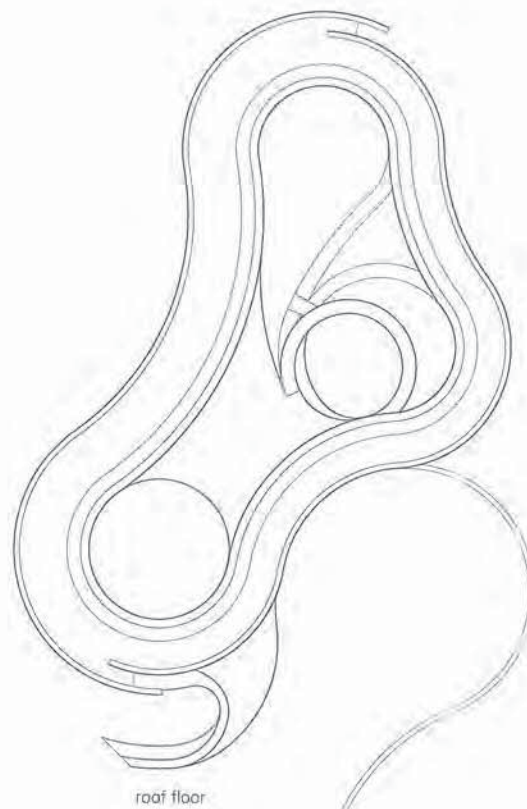
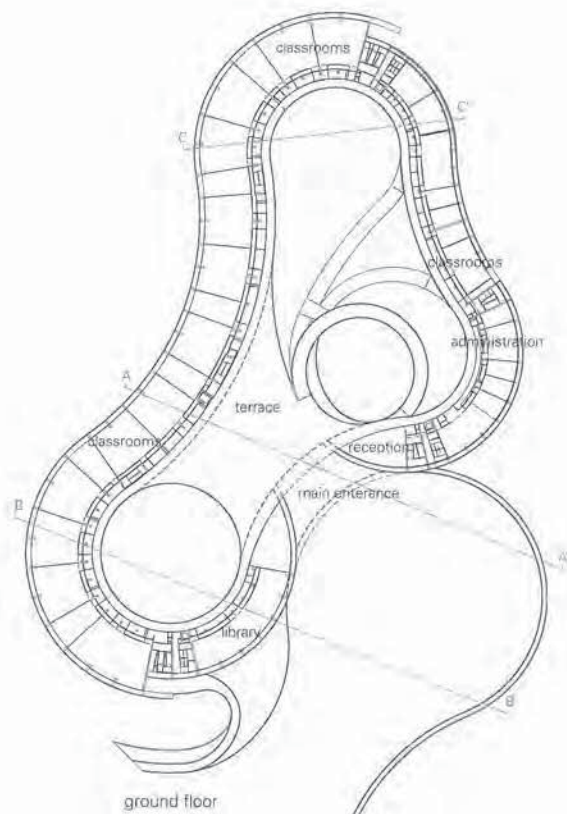
독특한 개성을 필요로 하는 예술학부답게 전형적인 교실의 모습이 아닌, 부드러운 곡선으로 이루어진 새로운 교실의 유형을 선보인다. 그리고 외벽을 둘러싼 거친 콘크리트는 건물 전체를 감싸며 도는 동선을 따라 외관을 보호하고, 포장한다.

그뿐만 아니라 예술학부가 들어서면서 캠퍼스 내에는 공공공간이 대폭 늘어났다. 이는 학생들이 더욱 쉽게 이곳을 드나들 수 있는 분위기를 조성해 서로 소통하고 교류할 수 있도록 돕는다. 학생들은 망설임 없이 시멘트 바닥에 주저앉아 정원을 바라보며 휴식을 취한다.

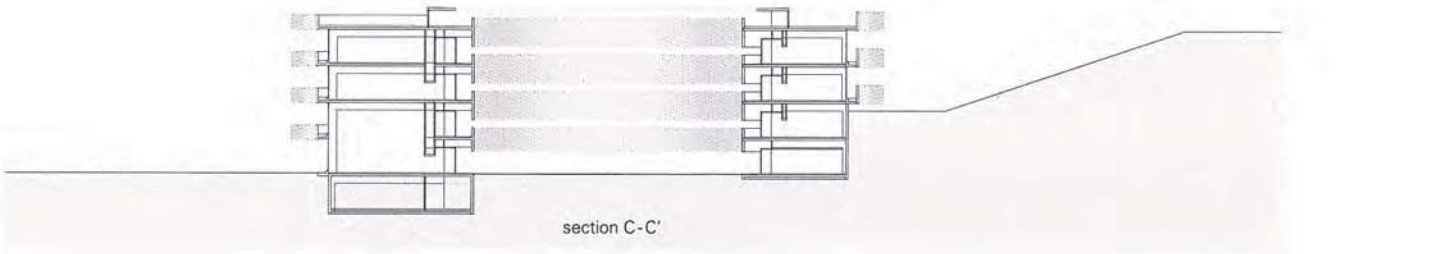
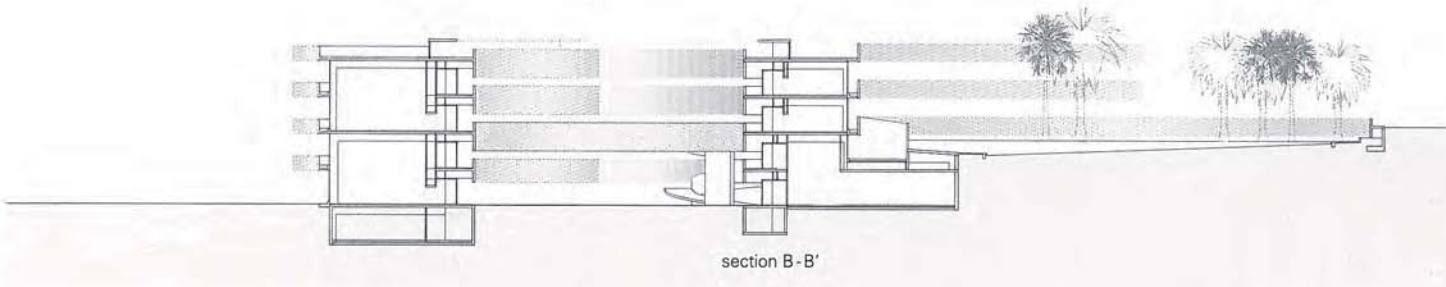
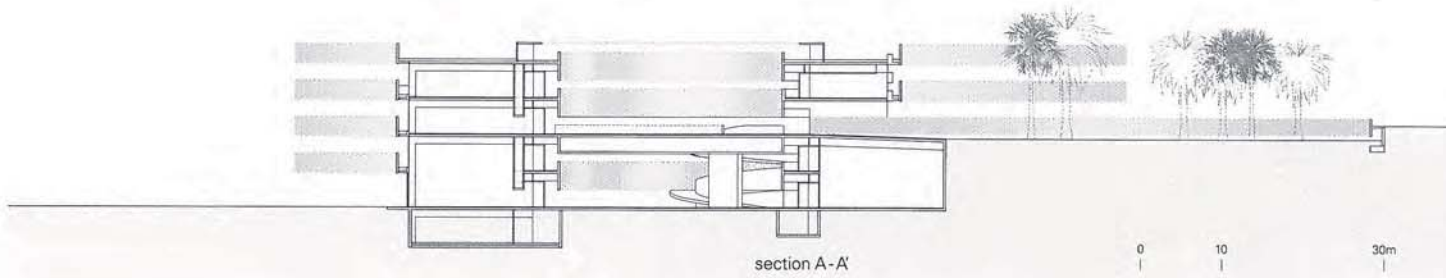
사용자는 곡선형 복도를 따라 걷게 되며, 그 끝에 다다르면 눈 앞에 펼쳐진 광장을 마주하게 된다. 이때 열린 복도를 포함해 강의실, 도서관, 전시실 등의 내부 공간은 곡선의 벽을 따라 다양하게 배치된다. 또한, 각각의 공간을 필요에 따라 쉽게 변형해 활용할 수 있도록 이동식 벽을 설치했다.





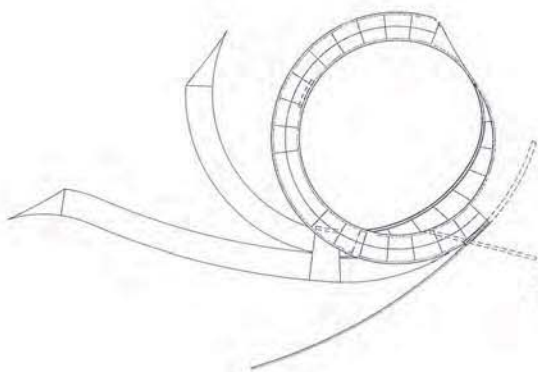
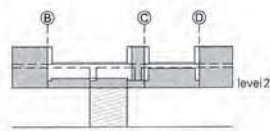
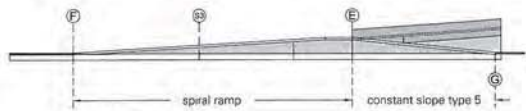
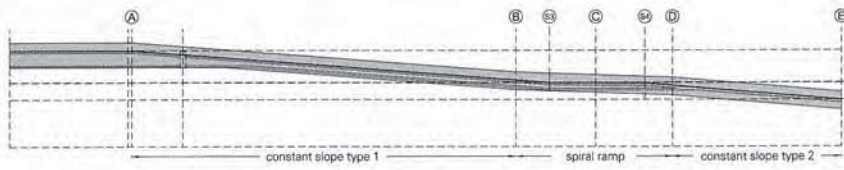




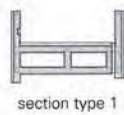




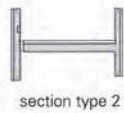




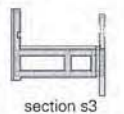
level 3



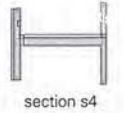
section type 1



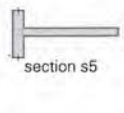
section type 2



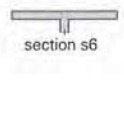
section s3



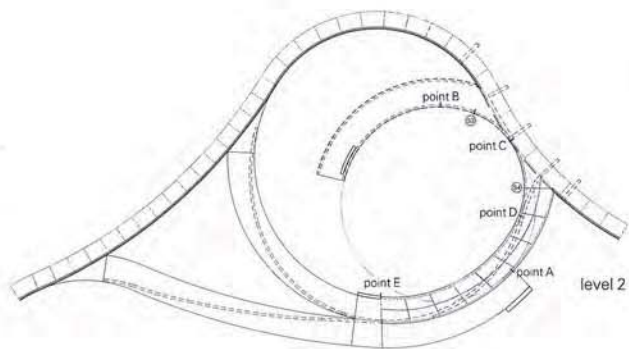
section s4



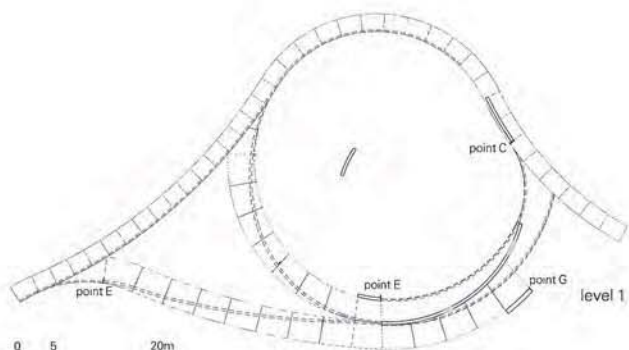
section s5



section s6



level 2



level 1



ramps detail





Project: Faculty of Fine Arts (Facultad de Bellas Artes), Universidad de La Laguna

Location: Campus de Guajara, La Laguna, Tenerife, Canary Islands, Spain

Architects: gpy arquitectos

Project team: Juan Antonio González Pérez, Urbano Yanes Tuña, Constanze Sixt

Collaborators: José Juan Aguilar Ramos, Attenya Campos de Armas, Carhel Chaves, Michel Correa Dos Ramos,

Raquel Guancho García, María Elena Lacruz Alvira, Juan Luis Marichal Hernández, Vanessa Mayato Antón, José Luis Novo Gómez,

Laura Pérez Rodríguez, Michela Pestoni, Alessandro Preda, Rubén Servando Carrillo, Gabriel Walti

Technical team: Luis Darias Martín (Asat), Héctor González Niebla (Asat), Juan Luis Marichal Hernández, José Ángel Yanes Tuña,

Miriam Hernández Pérez

Consultants: Fhecor Ingenieros Consultores, Gpi Ingenieros, Servicio de Ingeniería del Terreno (ULPGC), Poa Jardinería

Model: Katarzyna Billik, José Luis González Doña, Andrzej Gwizdala

Client: Universidad de La Laguna / Contact: UTE Edificio Bellas Artes

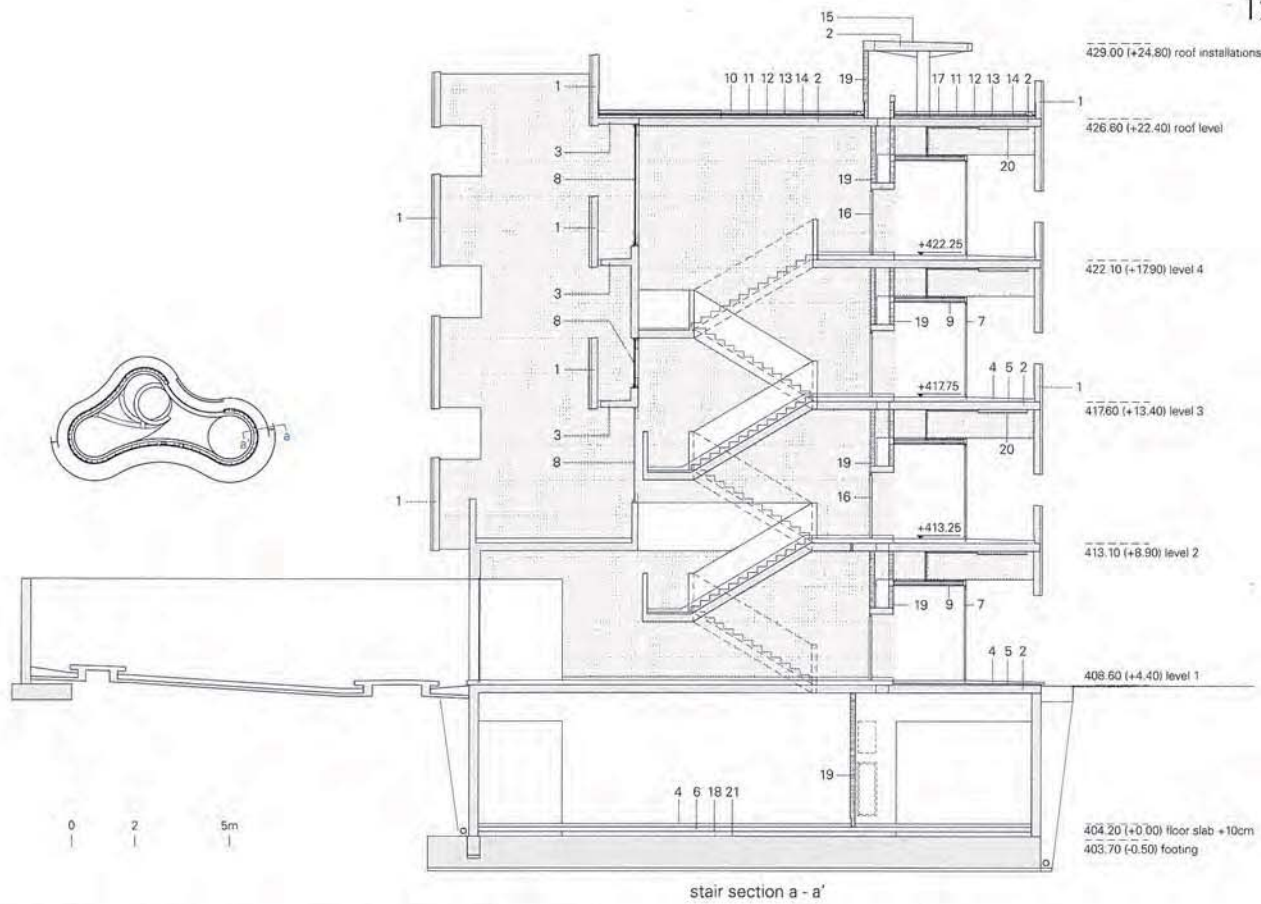
Bldg. area: 32,260m² / Gross floor area: 54,503m² / Design: 2010 / Completion: 2015

Photograph: ©Filippo Poli









- | | | |
|---|---|--|
| 1. Parapet, rc concrete, polygonal cast, textured finishing + transparent water-repellent protection | 8. Window, framework: anodized aluminium | 15. Waterproofing, glass fibre reinforced cement |
| 2. Floor slab, rc conc, l=25cm + transparent water-repellent prote | 9. Continuous suspended ceiling, plasterboard | 16. Fire door, varnished zinc plated steel |
| 3. Floor slab, rc conc, l=20cm + transparent water-repellent prote | 10. Protection layer, washed gravel (20-40mm), thickness=15cm | 17. Lightweight concrete |
| 4. In-situ concrete floor, e=12cm, trowelled finish | 11. Separating layer (geotextile) | 18. Geotextile |
| 5. Double layered, modified bitumen waterproofing membrane | 12. Insulation board, extruded polystyrene foam, 125x60x3cm | 19. Vibrated concrete block, thickness=15cm |
| 6. Foundation slab, reinforced concrete, thickness=20cm | 13. Waterproofing membrane | 20. Exterior lamp, stainless steel |
| 7. Frosted U-profile cast glass, double-glazed | 14. Levelling, lightweight concrete, thickness=15cm | 21. Quarrystone rubble |





