

# CA

현대건축 Vol.72  
Contemporary Architecture

## Remarkable Hospital



CA press  
현대건축사

CA Bimonthly Journal of  
Contemporary Architecture  
Published by CA Press Co.  
Issued in July 2009

**Publisher & Editor**  
Jeong, Ji-seong

**Editorial Committee**  
Kim, Seok-chul (Myungji Univ., Archiban)  
Ro, Hyoung-rae (Kunjung)  
Ryu, Choon-soo (Beyond Space Group)  
Yoo, Byoung-eok (Kangnam Univ.)  
Lee, Young-hee (Heerim)

**Technical Committee**  
Kim, Jong-hoon (Hanmiparsons)

**Executive Editor**  
Kim, Yong-sam

**Chief Editor**  
Yun, Sung-chul

**Editorial Journalist**  
Jo, Hyeon-jin  
Kil, Young-hwa / Myung, Sun-ah  
Lee, Na-mi / Kim, Yang-mi

**Art Director**  
Maeng, Ki-young / Lee, Eu-gene / Lim, Hye-sun

**Dept. Management**  
Shin, Ik-soo / Park, Sung-sun  
Jang, Sun-ae / Son, Mi-ran

**Advertising Manager**  
Im, Seung-kwon / Lee, Ju-young / Shin, Ji-hwan

**Photo**  
Choi, Jeong-bok

**Phototype Process**  
Samzine Printech

**Printing**  
ID Printing

Contemporary Architecture is Published in Korea  
248-32 Neung-dong, KwangJin-gu, Seoul, Korea  
Phone. 82-2-455-8040  
Management. 82-2-455-8043  
Fax. 82-2-455-8045

**Affiliated Publications**  
CONCEPT, MARU

USA \$29 €25

E-mail [capress@chol.com](mailto:capress@chol.com)  
[www.capress.co.kr](http://www.capress.co.kr)

Contents Copyright 2009© by architects & design, and may  
not be reproduced in any manner or form without  
permission.

# CA

현대건축 Vol. 72  
Contemporary Architecture

## Remarkable Hospital

6 Essay

### REMARKABLE HOSPITAL

- 8 Taniyama Hospital
- 18 Cedars-Sinai Medical Center Saperstein Critical Care Tower
- 30 Children's Department and Work Therapy
- 42 Evelina Children's Hospital
- 56 Womanmedi Hospital
- 64 Sekii Ladies Clinic
- 78 Ravelo Medical Clinic
- 88 King's Mill Hospital-Modernization of Acute Services
- 102 Hospital Regional De Alta Especialidad
- 116 Helsingør Psychiatric Hospital
- 128 Eye Bank of Veneto
- 136 Children's Center for Psychiatric Rehabilitation
- 144 Catholic University of Korea Seoul St. Mary's Hospital
- 158 National Heart Centre Singapore
- 166 Tokyo Bay Rehabilitation Hospital
- 180 DR.YOO Women Hospital
- 186 Vila de Conde Hospital
- 194 Venice-Mestre Hospital
- 216 Children's Medical Center Legacy

# Ravelo Medical Clinic \_ Tenerife, Spain

gpy arquitectos





This small outpatient clinic is located in the town of Ravelo, on the island of Tenerife.

The building has been designed on two levels, both with street-level pedestrian access: The main floor is occupied by the medical surgeries, while the lower floor houses administrative areas and multipurpose spaces for community activities.

Its main entrance has been adapted to the steep slope of the street and virtually extends the public space right into the building, which in turn projects it back out through the large panoramic window adjoining the waiting room.

The building is characterised by a dialogue between the external, concrete frame, open along the north-south axis, which constitutes an easily recognised, abstract landmark and lends the building its urban presence, and a continuous internal wooden skin which transforms the framed empty space into a series of rooms, separating the areas for specific use from the public ones such as the reception area and waiting room.

#### 라벨로 메디컬 클리닉

병원은 테네리페 섬의 라벨로 마을에 위치해 있다. 건축물은 2층으로 디자인 되었고, 양 층 모두 거리에서 보행자가 바로 접근할 수 있다. 주층은 외과 진료실이 있고, 하층은 행정구역 및 지역사회 활동을 위한 다용도 공간이 위치해 있다.

건물의 입구는 거리의 가파른 경사에 잘 적응되어 있고, 사실상 공공 공간을 건축물 속으로 곧바로 확장시키며, 또한 이 공공 공간을 대기실에 인접한 큰 파노라마식 창문을 통하여 뒤쪽 바깥으로 투사시킨다.

Architect gpy arquitectos

Location Calle Hoya de la Viuda s/n, Ravelo, Spain

Use Medical Clinic

Site Area 1,106m<sup>2</sup>

Bldg. Area 706m<sup>2</sup>

Gross Floor Area 325,80m<sup>2</sup>(Semibasement), 380,20m<sup>2</sup>(First Floor)

Bldg. Coverage Ratio 34%

Gross Floor Ratio 0,64%

Bldg. Scale 2 Stories above Ground

Structure Reinforced Concrete

Max. Height 7,15m

Landscape Area 530m<sup>2</sup>

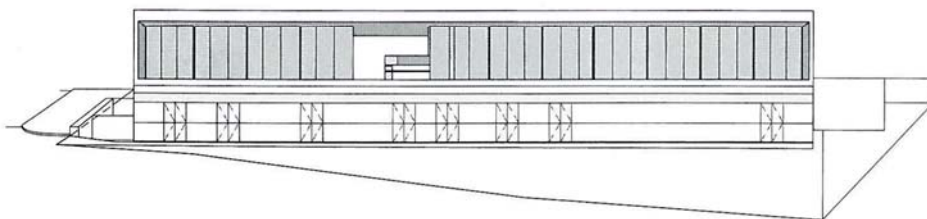
Parking Lot Emergency Service

Exterior Finish Concrete, Glass, Aluminium-PE Panels

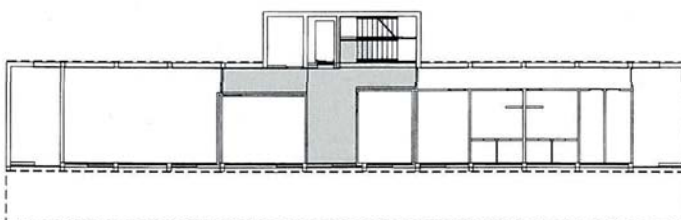
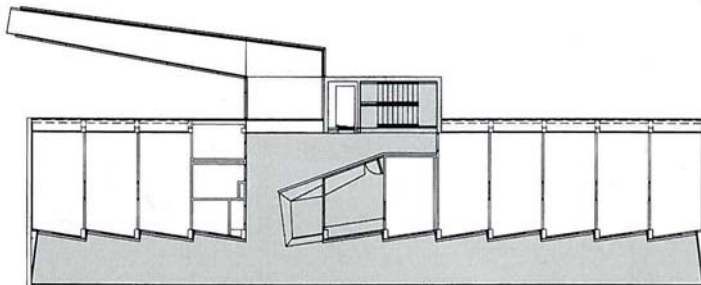
Client Gobierno de Canarias: Consejeria de Sanidad y Consumo(Canary

Islands Government: Health and Consume Council)

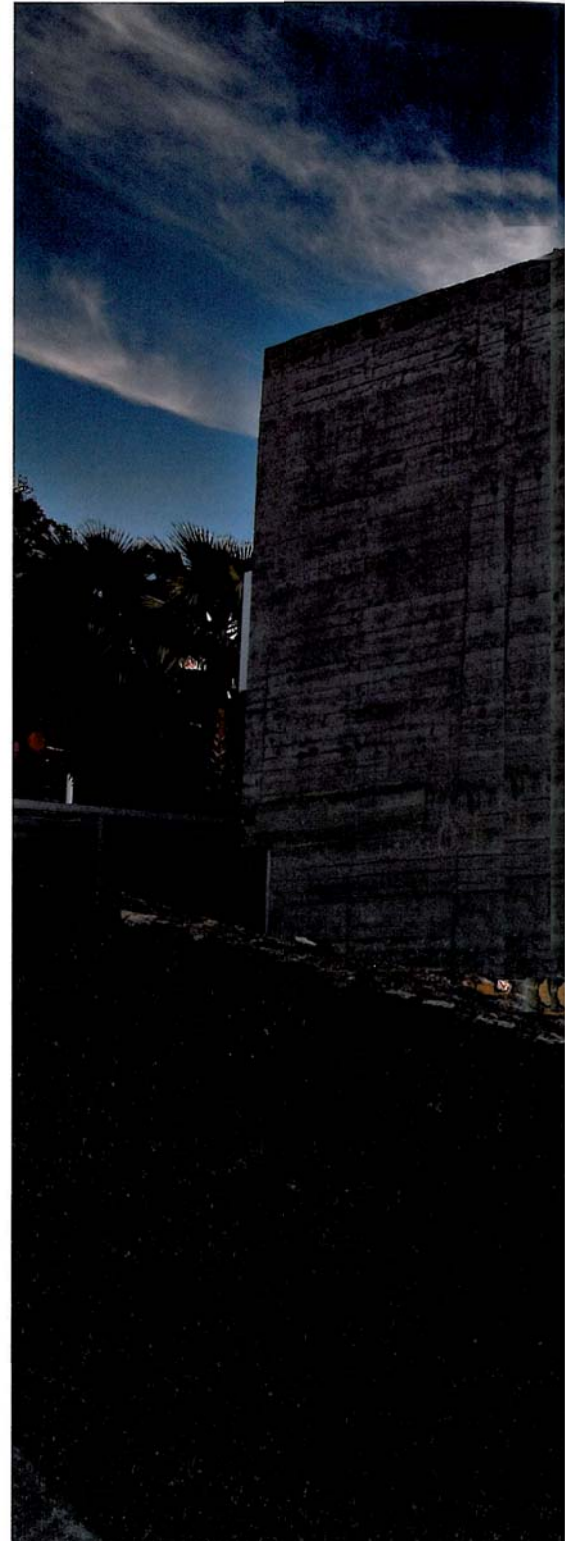
Photo Efrain Pintos

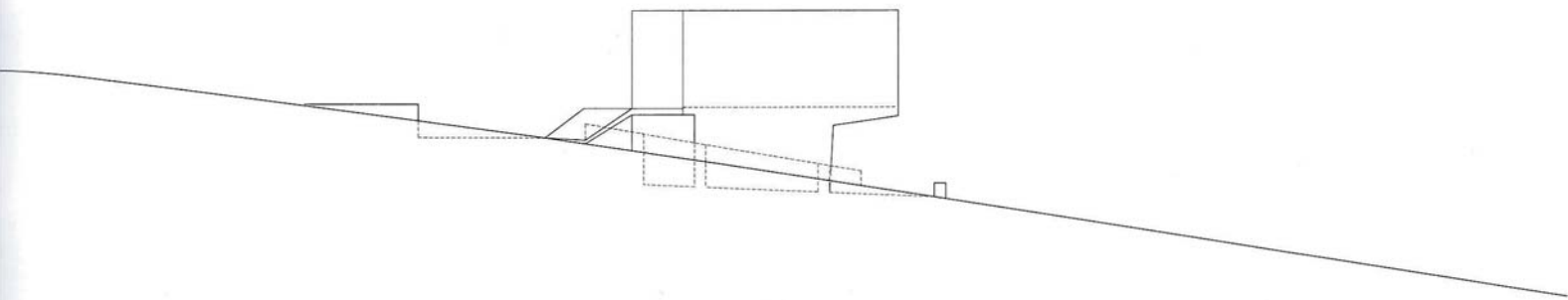


Hall Elevation



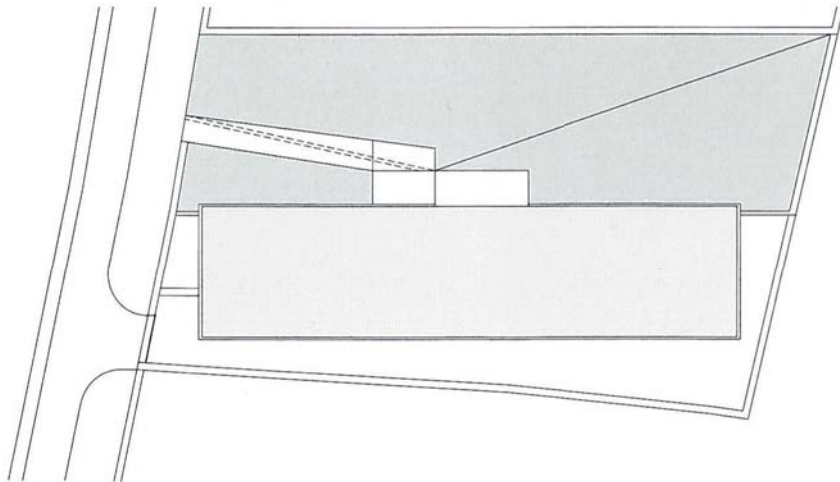
Hall Floor Plan



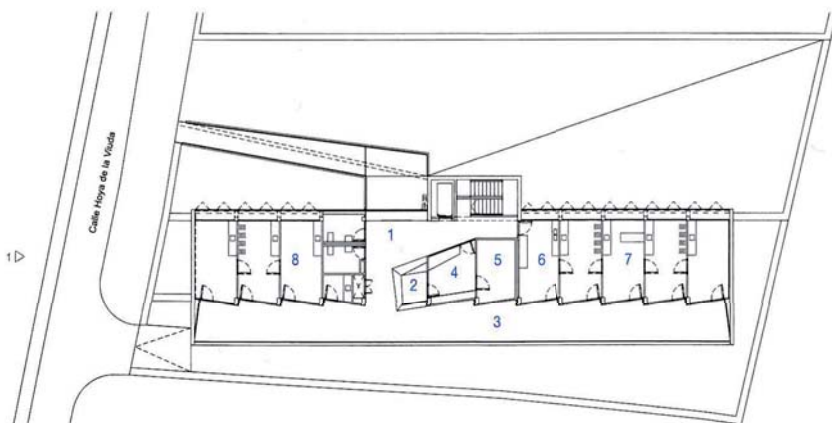


Section



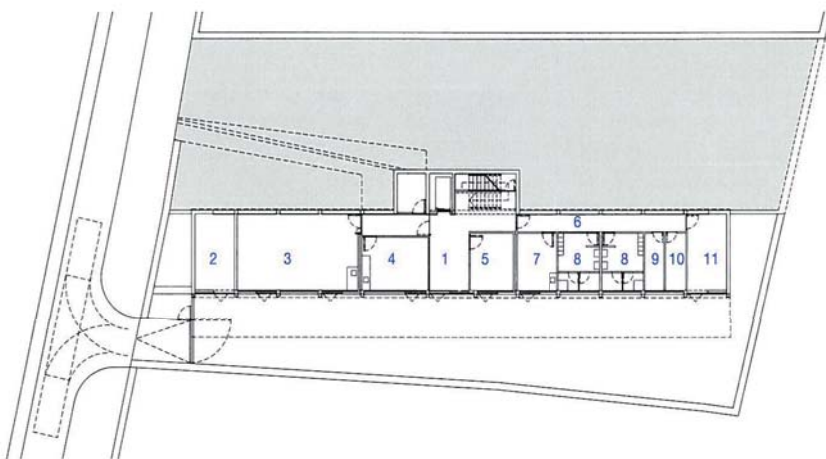
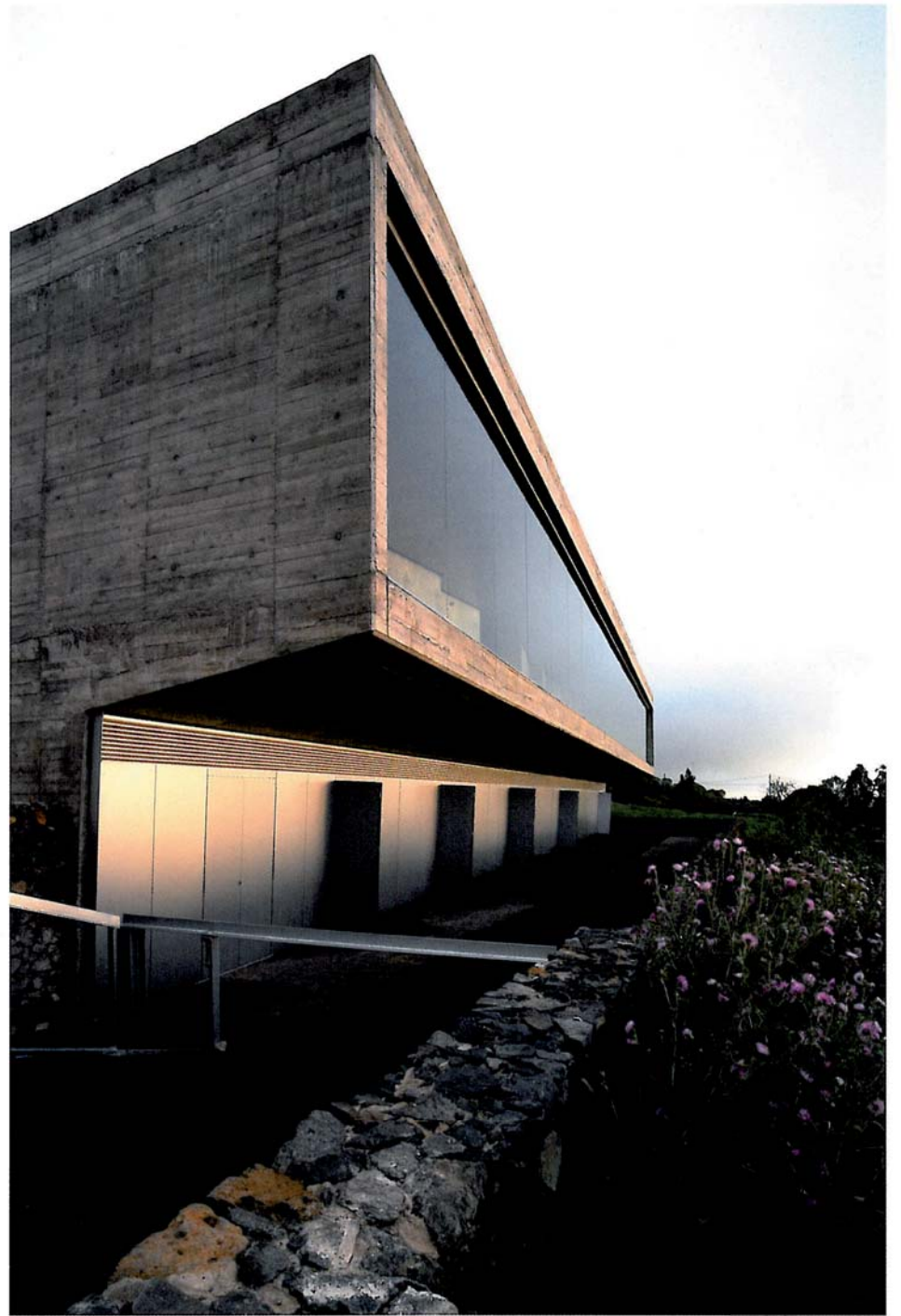


Roof Plan



1st Floor Plan

- 1. Hall
- 2. Reception
- 3. Waiting Area
- 4. Office
- 5. Archive
- 6. Analysis
- 7. Surgery
- 8. Pediatric Surgery



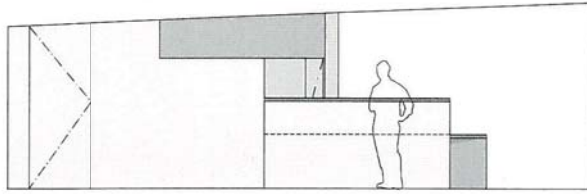
- 1. Waiting Area
- 2. Installations
- 3. Multipurpose Room / Childbirth Preparation
- 4. Matron
- 5. Social Assistance
- 6. Staff Area
- 7. Staff Room
- 8. Changing Rooms
- 9. Cleaning
- 10. Waste
- 11. Storage

Semibasement

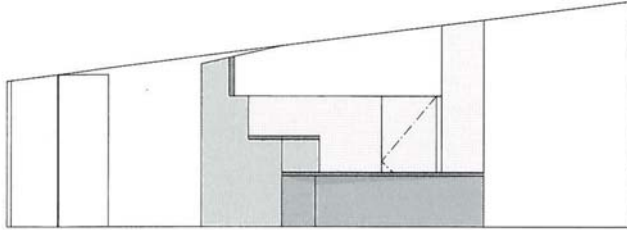




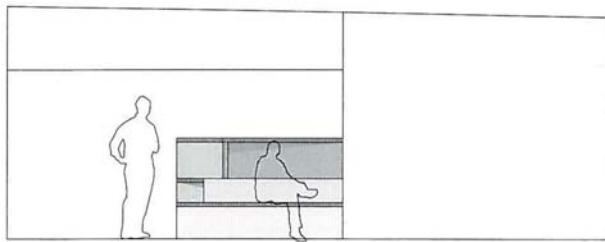




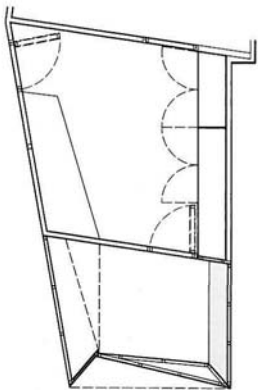
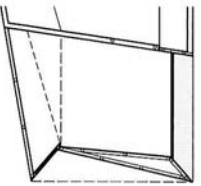
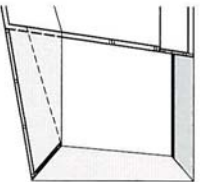
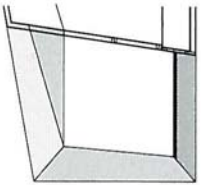
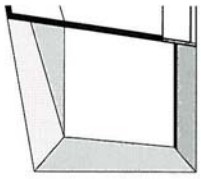
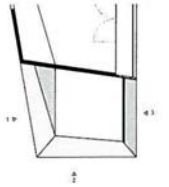
View 1



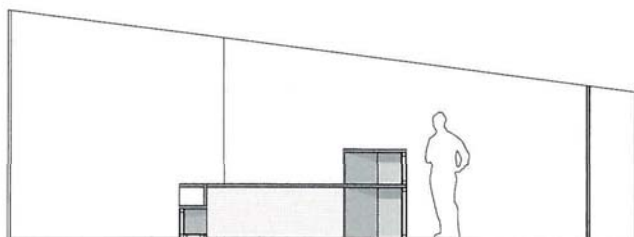
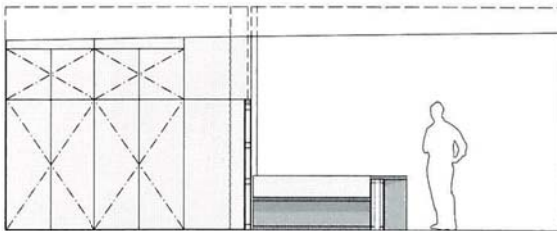
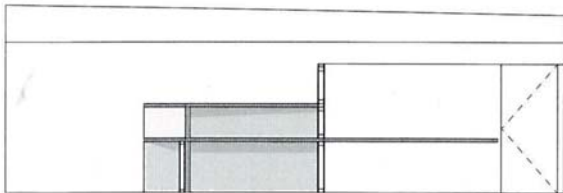
View 2



View 3



Reception Desk  
Detail Plan



Reception Desk Detail Elevation

